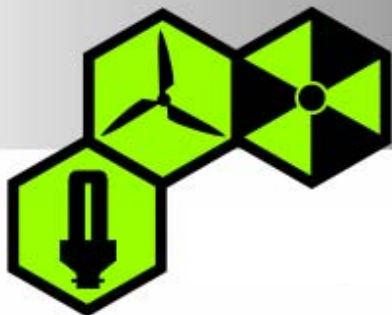




national home energy conference 2007



fuelling the debate

17-18 May in Belfast,
Northern Ireland

sponsored by

energy efficiency / renewables / nuclear power



Community Climate Change Action:
from 'Why should we?'
to 'How can we?'

Richard Davies
Chief Executive



Action Renewables
the future of energy, today



marches
energy agency



SHROPSHIRE

Energy Team



MARCHES

*Energy
Agency*



MARCHES



ENERGY AGENCY

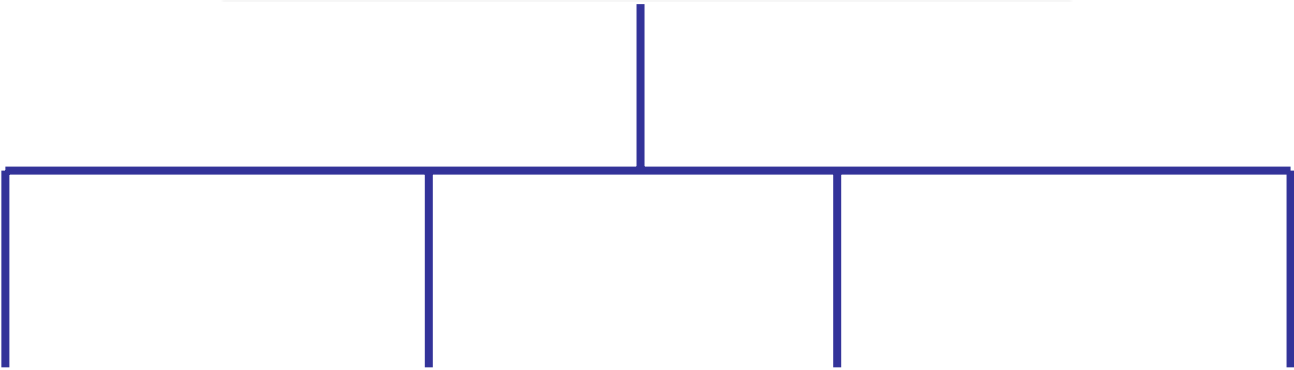
MARCHES



ENERGY AGENCY

marches
energy agency

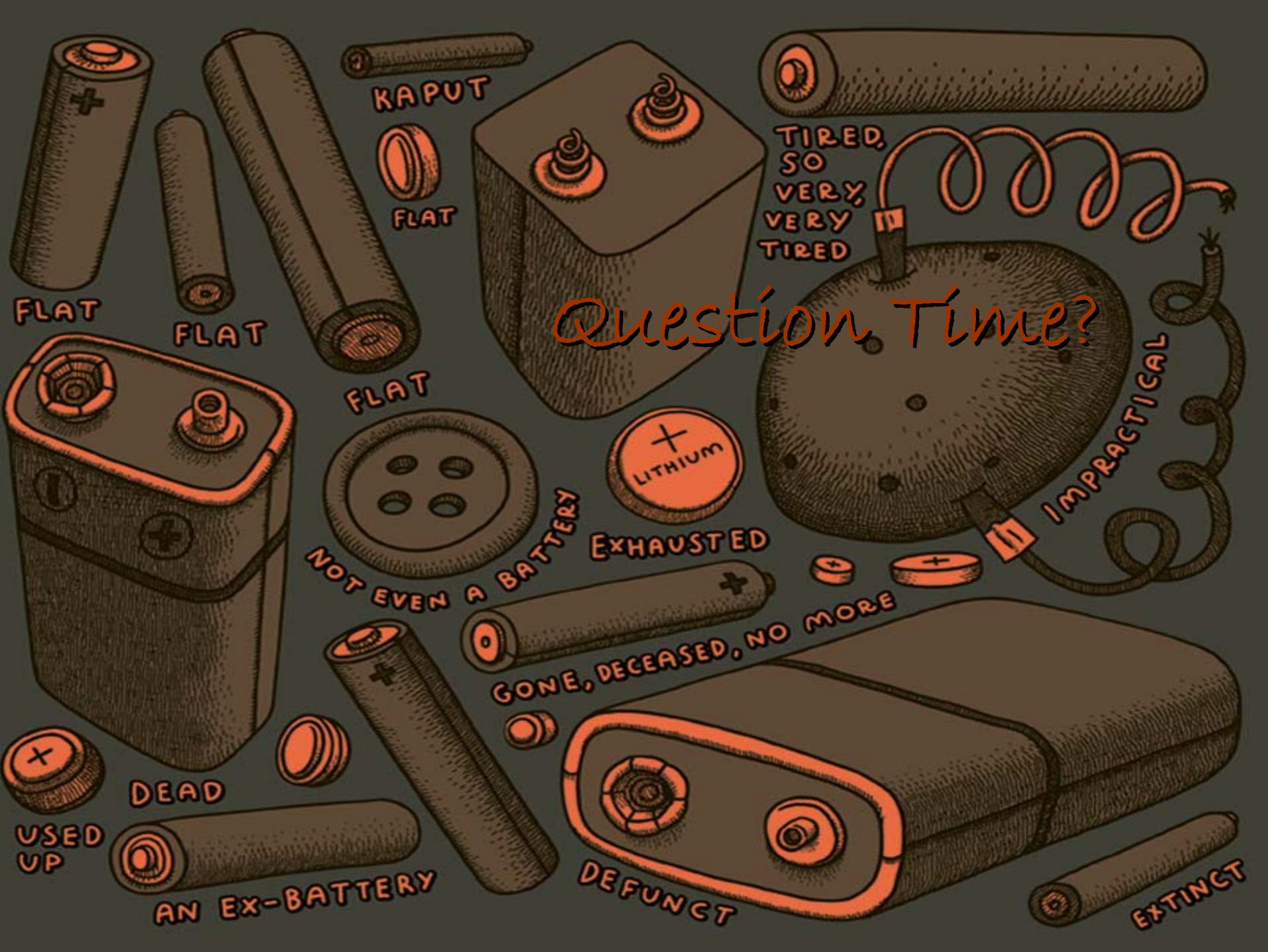




AL GORE

IS MY ♡

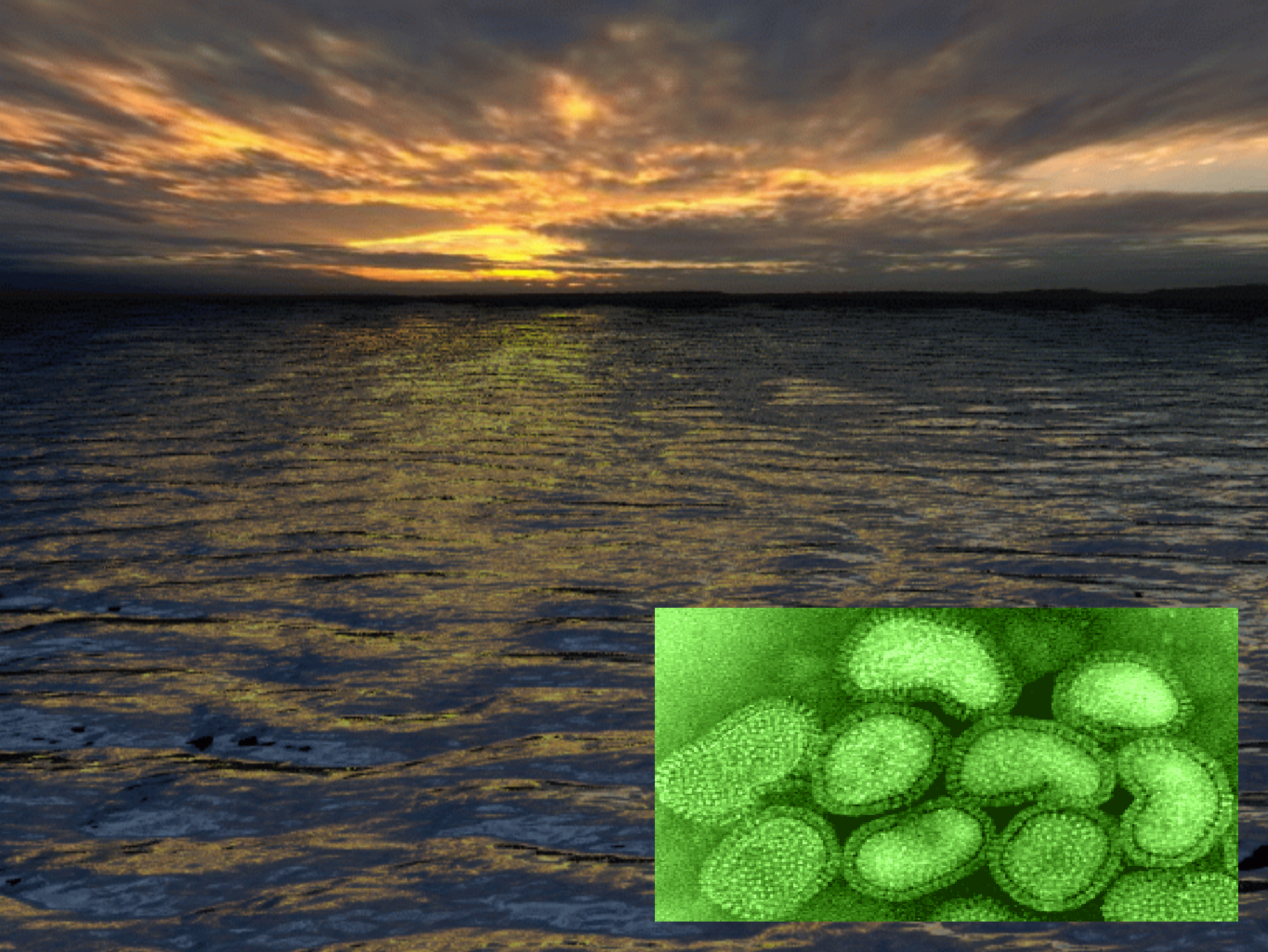
♡ HERO



Question Time?







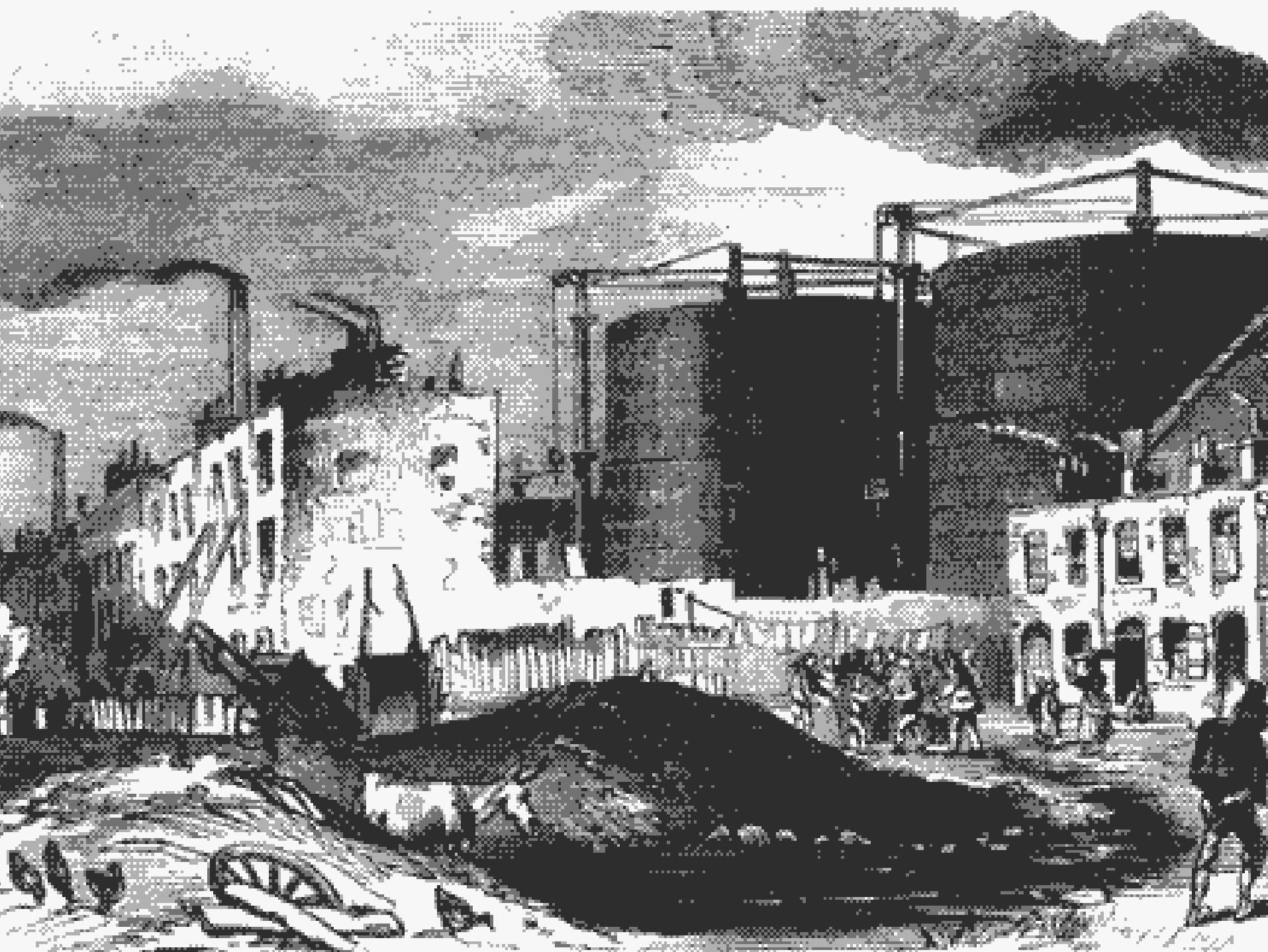








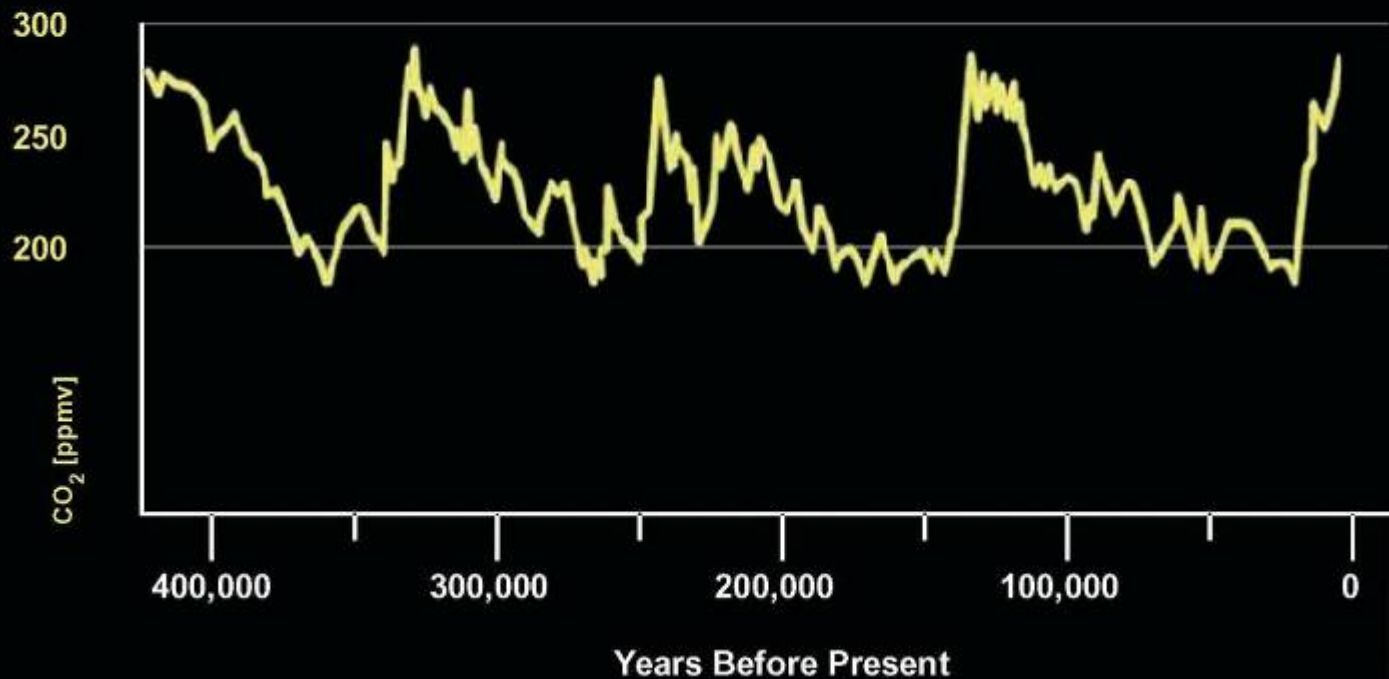




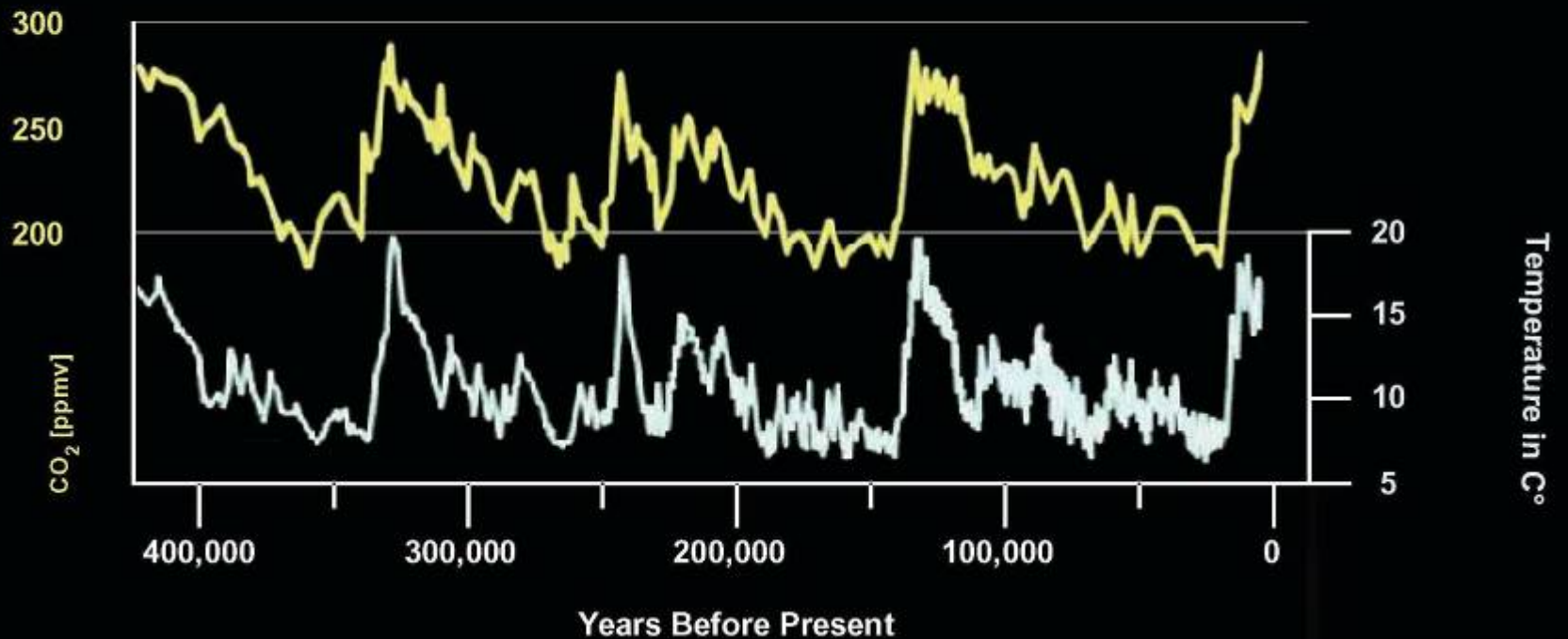


CO₂ Concentration

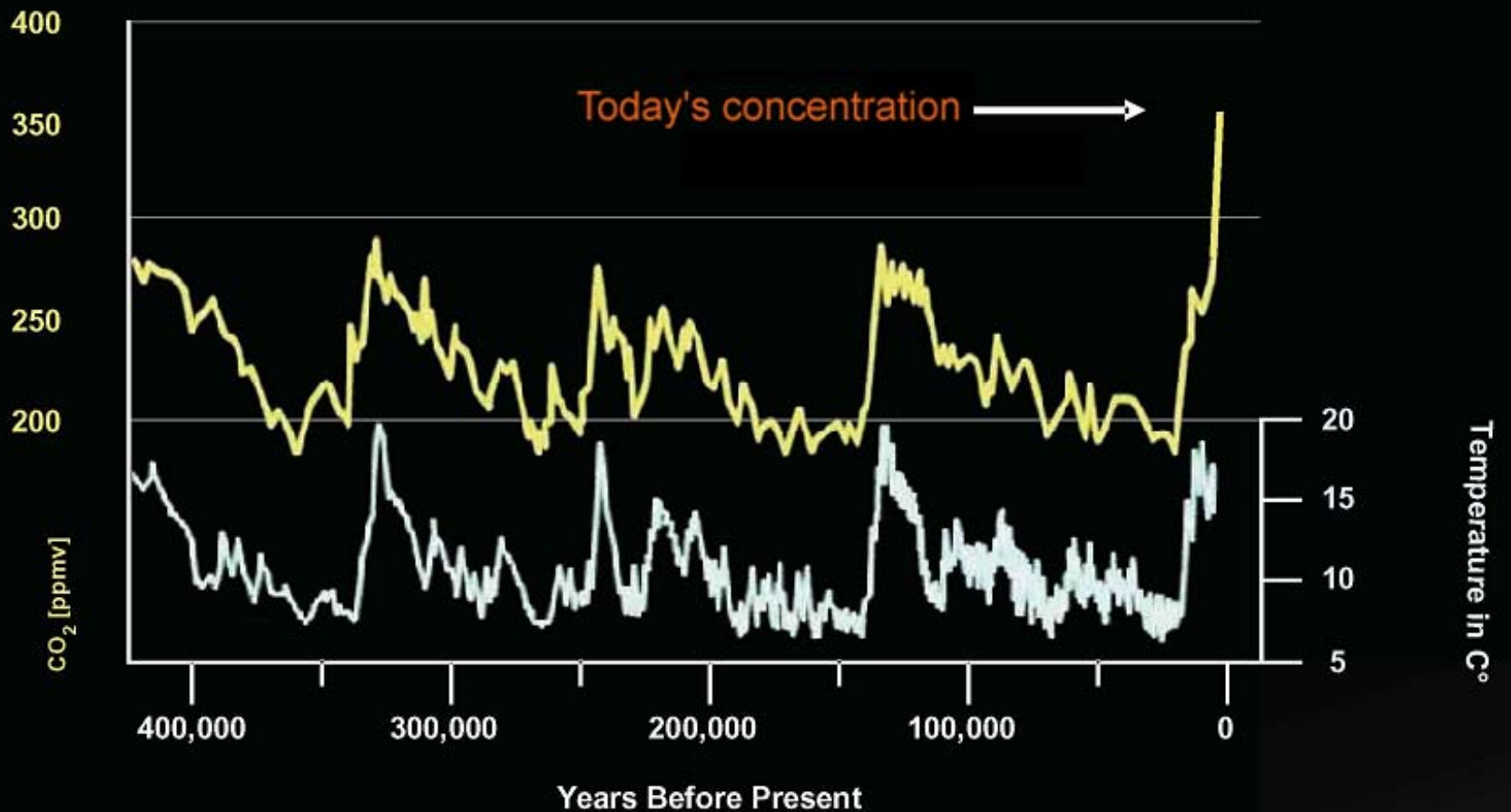
[ppmv]



CO₂ and Temperature



CO₂ and Temperature



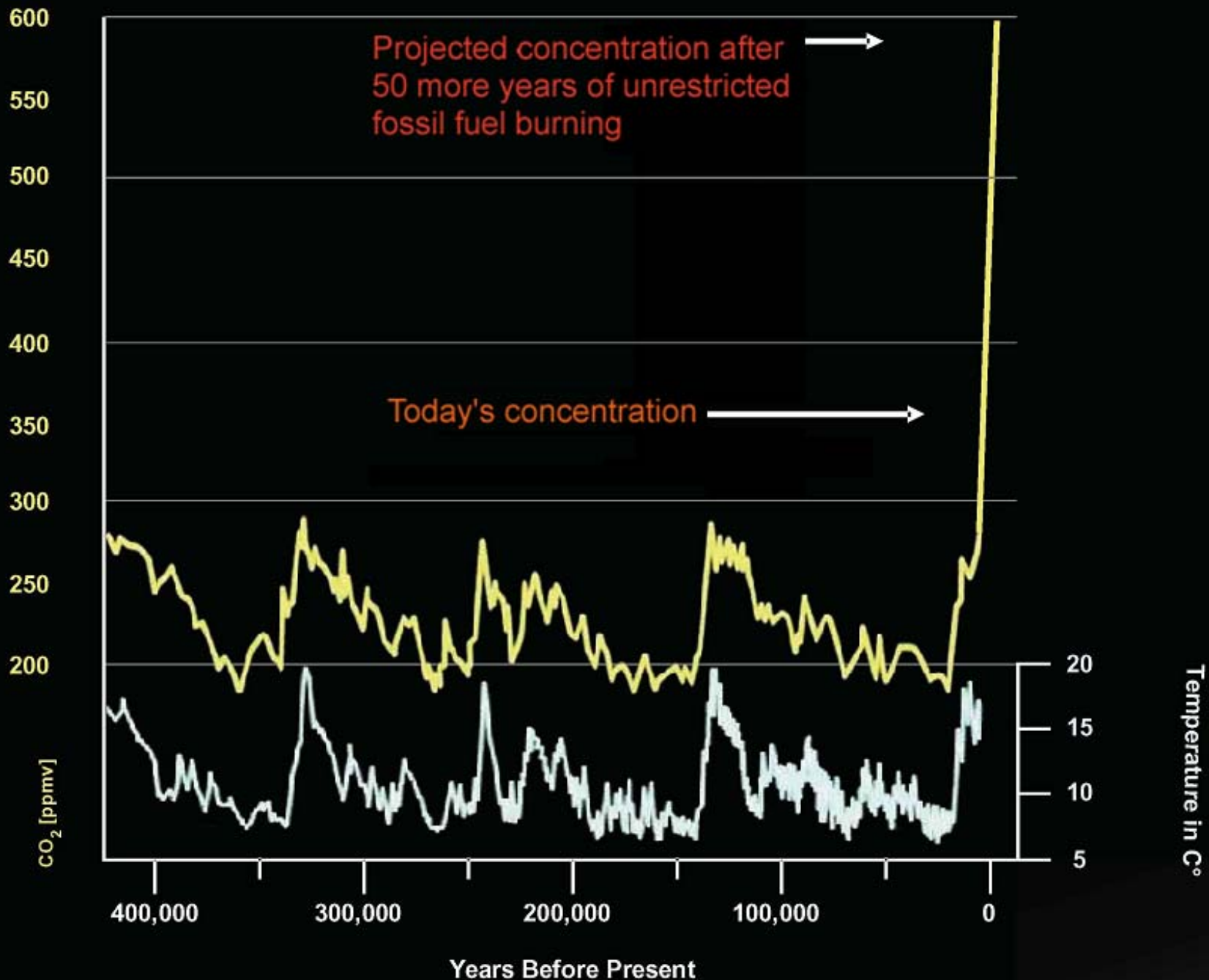
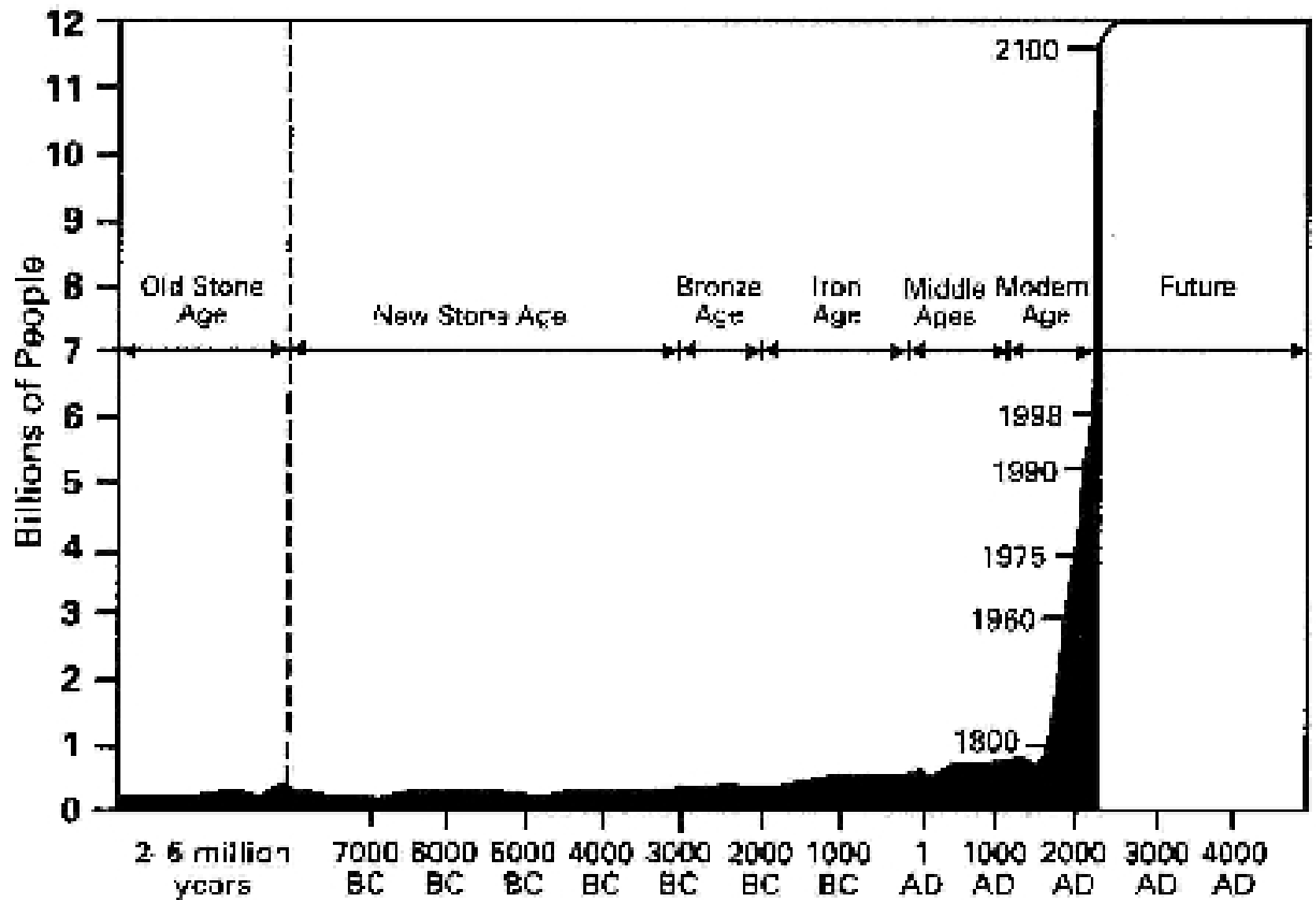


FIGURE 21-6. World Population Growth through History



Positive proof of global warming.



**18th
Century**

1900

1950

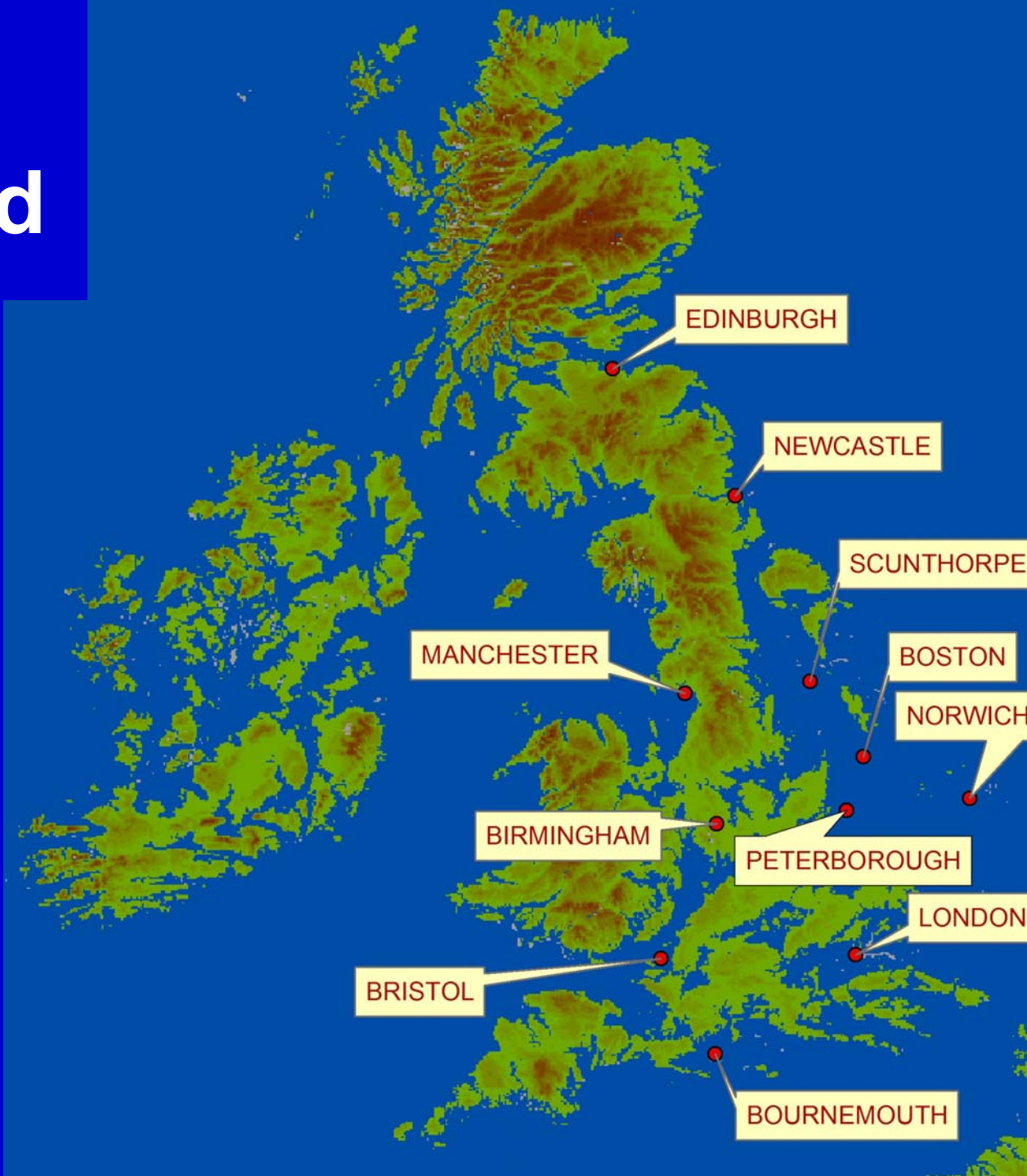
1970


1980

1990

2006

If all land ice melted





THE GREEN
IS VANISHING.

IT MIGHT NOT EVEN
WORRY YOU RIGHT
NOW, BUT IN THE NEAR
FUTURE TRY TO EXPLAIN
TO YOUR KIDS WHAT ALL
THE DIFFERENT HUES OF
GREEN ARE FOR.

Climate Change + Energy Security + Finite Fossil Fuel = The Same Actions

APRIL 3, 2006 www.fox.com

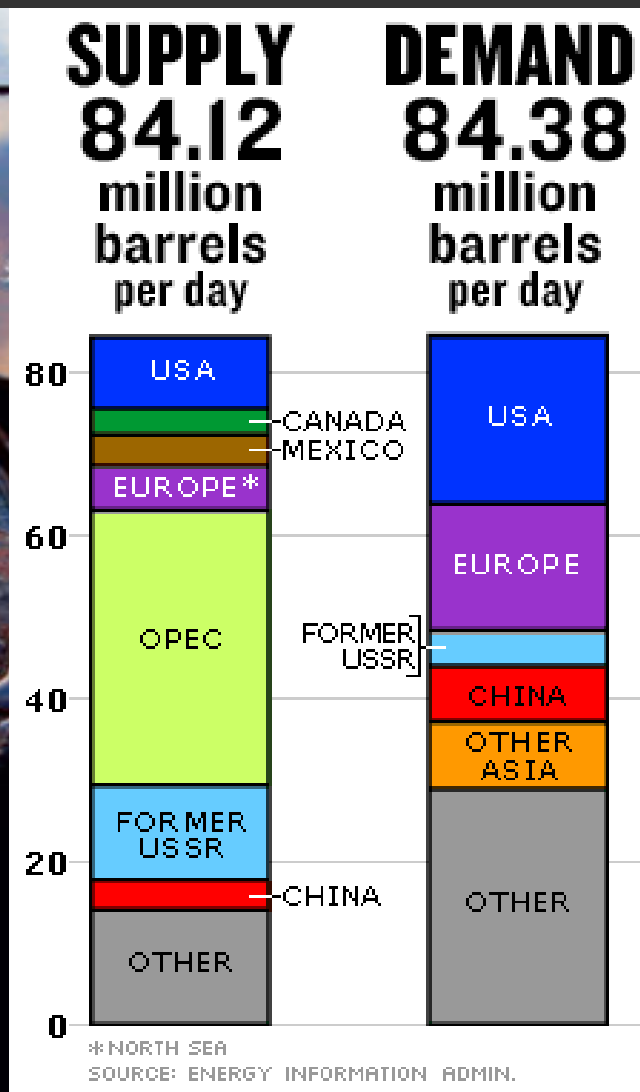
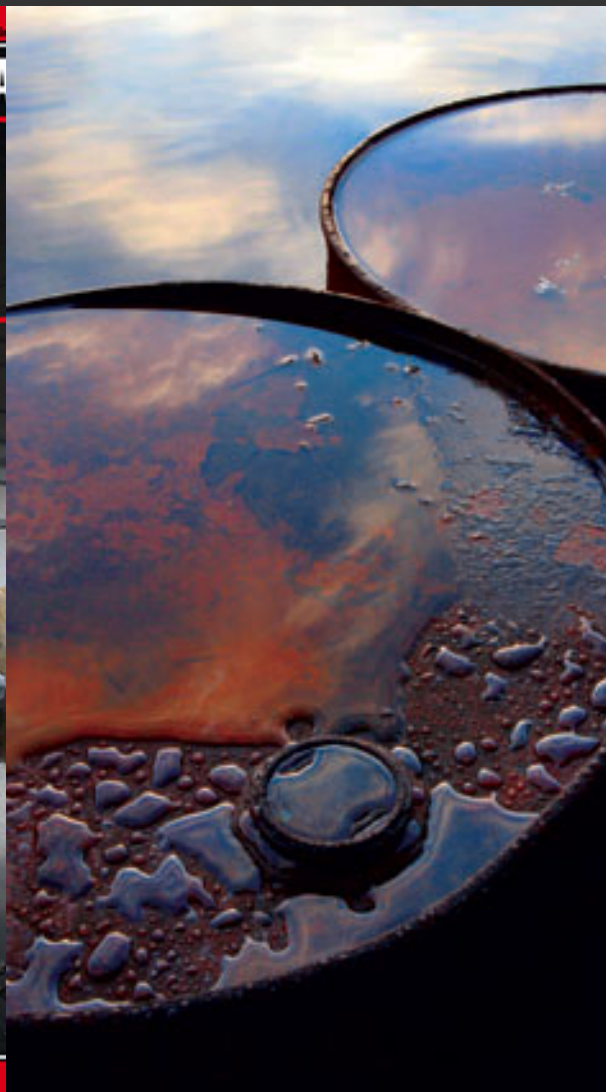
SPECIAL REPORT GLOBAL WARMING

TIM

**BE WORRIED.
BE VERY WORRIED.**

Climate change isn't some vague future problem—it's already damaging the planet at an alarming pace. Here's how it affects you, your kids and their kids as well

EARTH AT THE TIPPING POINT
HOW IT THREATENS YOUR HEALTH
HOW CHINA & INDIA CAN HELP SAVE THE WORLD—OR DESTROY IT
THE CLIMATE CRUSADERS





Please wait:

We're drilling

GAS

CHAPMAN
Infl 1 Herald Tribune

Sustainable Development

The Government's approach - delivering UK sustainable development together

[Home](#) | [Contact Us](#) | [A-Z](#) | [Help](#)

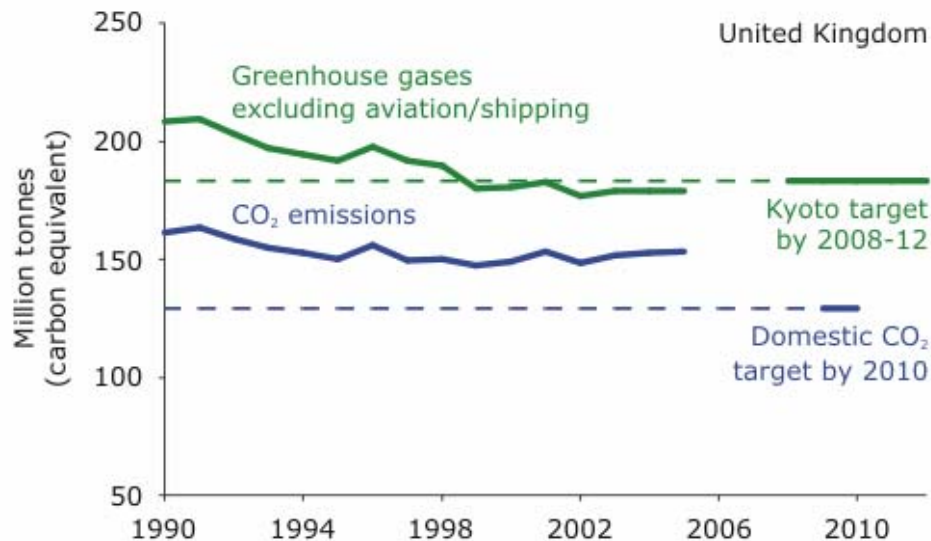
[Homepage](#) > [Reviewing progress](#) > [List of indicators](#) > [Indicator 1](#)

Sustainable consumption and production Climate change and energy

- [Home](#)
- [What is it?](#)
- [Advice & support](#)
- [What is Government doing?](#)
- [International](#)
- [Reviewing progress](#)
- [Publications](#)
- [About us](#)

1. Greenhouse gas emissions*

Kyoto target and CO₂ emissions, 1990 to 2012



Source: Defra, DTI, netcen

Greenhouse gas emissions since: 1990  1999 

5.2 Electricity supply and consumption

	GWh							
	1998	1999	2000	2001	2002	2003	2004	2005
Supply								
Production	361,078	365,250	374,374	382,364	384,594	395,475r	392,657r	397,595
Other sources (1)	1,624	2,902	2,694	2,422	2,652	2,734	2,649	2,930
Imports	12,599	14,507	14,308	10,663	9,182	5,119	9,784	11,160
Exports	-131	-263	-134	-264	-768	-2,959	-2,294	-2,839
Total supply	375,170	382,396	391,243	395,185	395,661	400,369r	402,795r	408,846
Statistical difference (2)	+1,861	+1,564	+1,497	+1,175	+983	+2,208r	+3,355r	+1,581
Total demand	373,309	380,832	389,746	394,010	394,678	398,161r	399,440r	407,265

7.4 Electricity generated from, renewable sources

	1998	1999	2000	2001	2002	2003	2004	2005
Generation (GWh)								
Wind:								
Onshore (5)	877	850	945	960	1,251	1,276	1,736	2,505
Offshore (6)	-	-	1	5	5	10	199	403
Solar photovoltaics	-	1	1	2	3	3	4	8
Hydro:								
Small scale (5)	206	207	214	210	204	143r	283r	467
Large scale (2)	4,911	5,128	4,871	3,845	4,584	3,085r	4,647r	4,494
Biofuels:								
Landfill gas	1,185	1,703	2,188	2,507	2,679	3,276	4,004	4,290
Sewage sludge digestion	386	410	367	363	368	343	379	400
Municipal solid waste combustion (7)	849	856	840	880	907	965	971	964
Co-firing with fossil fuels	-	-	-	-	286	602	1,022	2,533
Other (8)	234	460	487	776	840	937	927	855
Total biofuels	2,654	3,429	3,882	4,526	5,080	6,122	7,302	9,042
Total generation	8,648	9,616	9,914	9,549	11,127	10,638	14,171	16,919

"Tackling climate change will take leadership, dynamism and commitment - qualities that I know are abundantly represented in this room. To acquire global leadership, on this issue Britain must demonstrate it first at home."





'What's wrong with global warming? We might lose Holland...but there are other places to go on holiday.'



PACIFIC SYSTEMS
KOLKATA APARTMENTS
HOUSE NO. 11 1/2, BIRTH WARDHANS
LAKSHMIPOUR ROAD, PUNEKA COL.



philosophy

- No single solution (wind, hydrogen, CCS)
- Don't need anything to be invented
- Everything we need to do has been successfully delivered somewhere in the UK
- Give us a chance to do 'bottom up' before 'you' force us into 'top down'
- Too much rhetoric, not enough action (MEA do rhetoric & action!)
- UK's emissions at 2% of globe – quantitatively irrelevant, qualitatively **crucial**

Why 'Community Action'?

- We don't have a 'regular' community who we can point to & say – 'more of these please!'
- We aren't joined up! Too much single sector/issue e.g. renewables, domestic, business, fuel poverty
- Not enough focus on community approaches – joined up 'good enough' action
- Does it really matter whether we demonstrate a 'low carbon community' at a UK scale, regional scale, or sub-regional scale? (Yes! But let's not take 100 years over it)
- Margaret Mead was right (probably!)



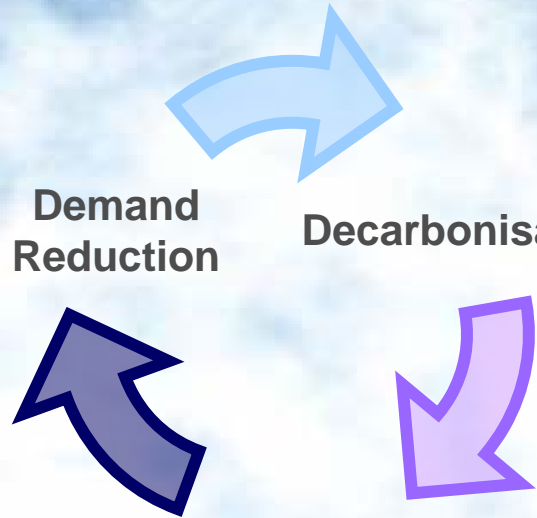
'Never doubt that a small group of thoughtful, committed citizens can change the world.

Indeed, it is the only thing that ever has.'

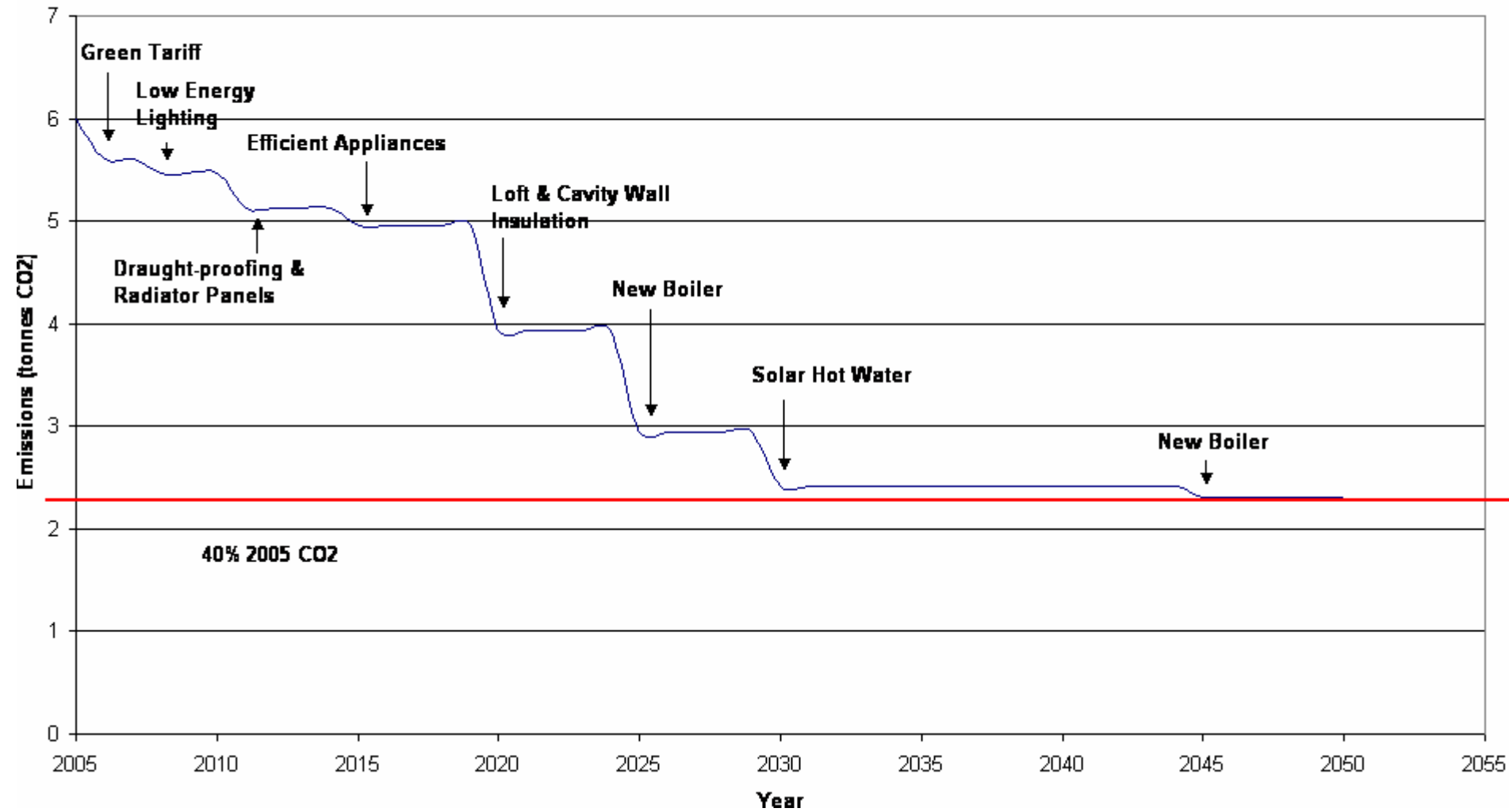
**Demand
Reduction**

Decarbonisation

Decentralisation



The 40% House





Low
Carbon
CO₂mmunity

Welcome to our

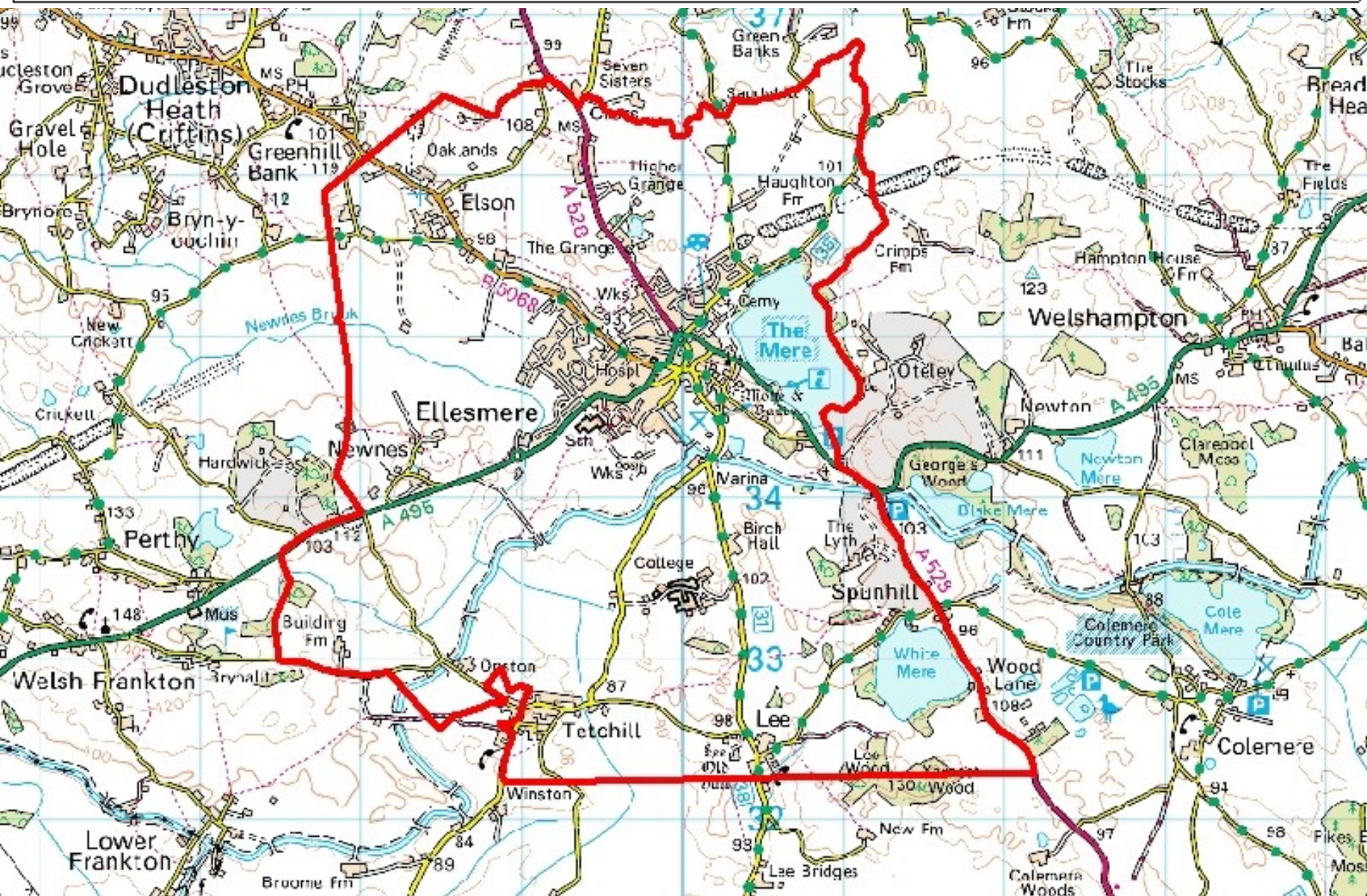


Low
Carbon
CO₂mmunity

please reduce your carbon emissions



Together, this community can tackle climate change





PROJECT
carbon.org

REDUCING CARBON EMISSIONS



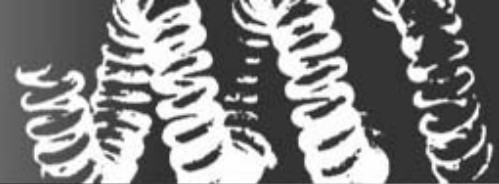
PROJECT
carbon
REDUCING CARBON EMISSIONS

marches
energy agency

PHILIPS
100
PHILIPS
60

PHILIPS
100
MARCHES
ENERGY AGENCY

MIC-11-010-001-01
MIC-11-010-001-02
MIC-11-010-001-03
MIC-11-010-001-04
MIC-11-010-001-05
MIC-11-010-001-06
MIC-11-010-001-07
MIC-11-010-001-08
MIC-11-010-001-09
MIC-11-010-001-10
MIC-11-010-001-11
MIC-11-010-001-12
MIC-11-010-001-13
MIC-11-010-001-14
MIC-11-010-001-15
MIC-11-010-001-16
MIC-11-010-001-17
MIC-11-010-001-18
MIC-11-010-001-19
MIC-11-010-001-20
MIC-11-010-001-21
MIC-11-010-001-22
MIC-11-010-001-23
MIC-11-010-001-24
MIC-11-010-001-25
MIC-11-010-001-26
MIC-11-010-001-27
MIC-11-010-001-28
MIC-11-010-001-29
MIC-11-010-001-30
MIC-11-010-001-31
MIC-11-010-001-32
MIC-11-010-001-33
MIC-11-010-001-34
MIC-11-010-001-35
MIC-11-010-001-36
MIC-11-010-001-37
MIC-11-010-001-38
MIC-11-010-001-39
MIC-11-010-001-40
MIC-11-010-001-41
MIC-11-010-001-42
MIC-11-010-001-43
MIC-11-010-001-44
MIC-11-010-001-45
MIC-11-010-001-46
MIC-11-010-001-47
MIC-11-010-001-48
MIC-11-010-001-49
MIC-11-010-001-50
MIC-11-010-001-51
MIC-11-010-001-52
MIC-11-010-001-53
MIC-11-010-001-54
MIC-11-010-001-55
MIC-11-010-001-56
MIC-11-010-001-57
MIC-11-010-001-58
MIC-11-010-001-59
MIC-11-010-001-60
MIC-11-010-001-61
MIC-11-010-001-62
MIC-11-010-001-63
MIC-11-010-001-64
MIC-11-010-001-65
MIC-11-010-001-66
MIC-11-010-001-67
MIC-11-010-001-68
MIC-11-010-001-69
MIC-11-010-001-70
MIC-11-010-001-71
MIC-11-010-001-72
MIC-11-010-001-73
MIC-11-010-001-74
MIC-11-010-001-75
MIC-11-010-001-76
MIC-11-010-001-77
MIC-11-010-001-78
MIC-11-010-001-79
MIC-11-010-001-80
MIC-11-010-001-81
MIC-11-010-001-82
MIC-11-010-001-83
MIC-11-010-001-84
MIC-11-010-001-85
MIC-11-010-001-86
MIC-11-010-001-87
MIC-11-010-001-88
MIC-11-010-001-89
MIC-11-010-001-90
MIC-11-010-001-91
MIC-11-010-001-92
MIC-11-010-001-93
MIC-11-010-001-94
MIC-11-010-001-95
MIC-11-010-001-96
MIC-11-010-001-97
MIC-11-010-001-98
MIC-11-010-001-99
MIC-11-010-001-100



Want to reduce your corporate emissions?
talk to project carbon 0845 754 6007 or click for more information



- home
- first reduce...
- ...then offset
- the famous van...
- products
- projects
- about
- news
- case studies
- contact
- view cart

Username: *

Password: *

Log in

- Create new account
- Request new password



Welcome to ProjectCarbon.org

Projectcarbon.org is a UK based, not-for-profit carbon reduction service. We aim to help you understand and reduce your carbon footprint, and to provide you with a unique service that enables you to compensate for your non-reducible carbon dioxide emissions - whether you're a householder or a business.

All of our projects focus on UK communities and are concerned with the actual reduction of carbon emissions - rather than dealing with those already emitted. That means that we don't plant trees! Our projects lead to real carbon savings and help communities retain economic benefit where it is needed most. And because we are not-for-profit we are typically able to spend much more of your money on direct project costs than other profit driven enterprises. We are managed by Marches Energy Agency, an organisation that has been in existence for over 11 years and has a portfolio of innovative and highly successful carbon reduction projects.

First reduce...

Tackling climate change requires dedication...but it's not difficult. The first step is to understand your own energy use and to reduce it where possible.

...then offset

Once this is done you can compensate for your non-reducible emissions (those that aren't easily reduced) by contributing to ProjectCarbon.org and we'll reduce an equivalent amount elsewhere. Simple.

DELIVERING CARBON REDUCTIONS



Carbon Neutral Rural Affairs Forum: Studley Village Hall 14th September 2006

The West Midlands Rural Affairs Forum has become the country's first carbon neutral Forum by offsetting the carbon emissions associated with the activities of the Forum through sustainable energy initiatives in rural community buildings in the West Midlands. This case study highlights the emissions and associated offset for the Forum's first carbon neutral meeting held 14th September 2006.

September Forum Statistics:

- Number of Attendees: 40
- Total distance travelled: 2,906 miles
- Average distance travelled: 72.6 miles
- Modes used: Car (93.2%) Train (6.3%) Bus (0.5%)
- Carbon dioxide emissions associated with travel: 744 kg
- Carbon dioxide emissions associated with use of venue: 9 kg
- **Total Carbon dioxide emissions: 753 kg**



■ Bus
■ Train
■ Car



Offset Statistics:

- Location of sustainable energy measures: Shropshire Wildlife Trust HQ Shrewsbury
- Measure: Installation of 155 compact fluorescent GU10 low energy lamps
- 1,705W of low energy lighting replacing 7,750W of incandescent lighting
- **Total savings: £10,497, 38,990kg of carbon dioxide** (WMRAF require 2% of the carbon savings)





Low
Carbon
CO₂mmunity
for **Business**

The Royal Hill, Edgerley

- Popular pub with large games room in the 'floodplain' area
- Lighting in use for at least 8 hours daily
- 54 Bulbs replaced with low energy, long-life equivalents saving:
 - Over £800 in electricity costs per year
 - Over 4 tCO₂ per annum
- Included "spot reflector" and "candle" type bulbs
- 'Lifetime' Savings of:
 - £3,800 (including £200 in avoided bulb replacement costs)
 - Over 19tCO₂
- Initial investment cost of £413 (6 month 'payback' period)



News & Info

- ▶ Energy news
- ▶ Tariff change timeline
- ▶ Climate change news

Browse Energy

Energy

- ▶ Dual Fuel
- ▶ Electricity
- ▶ Gas
- ▶ CO2 Offsetting - **NEW**

About Switching

- ▶ Why switch?
- ▶ What do I need?
- ▶ How does it work?
- ▶ What happens next?
- ▶ Advantages?
- ▶ Prices?
- ▶ Help
- ▶ How does Tesco make money?
- ▶ What about suppliers' customer service levels?
- ▶ How can I get help with using less energy?
- ▶ Does this service include historical tariff information?

- ▶ FAQ
- ▶ CO2 FAQ - **NEW**
- ▶ Privacy
- ▶ Terms & conditions

Tesco supports the new UK Government's initiative for carbon offsetting standards

Tesco is participating in the government's recent drive to establish standards for CO2 offsetting.

Offset Your Carbon Emissions

- ✓ Purchase CO₂ certificates that match your household emissions
- ✓ Use your savings from switching energy suppliers
- ✓ Completely compliant with Kyoto Protocol standards
- ✓ Earn green clubcard points

Start offsetting now!

Enter your annual gas and electricity spend to the nearest pound

If you do not use mains gas, leave the field empty

Annual gas bill: £ e.g. 350

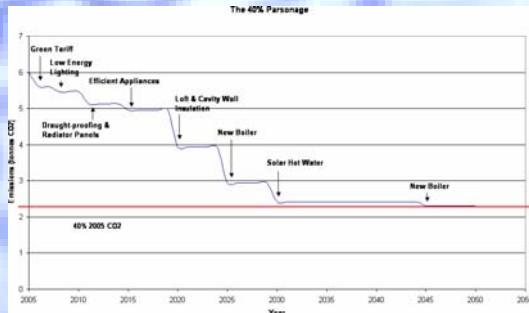
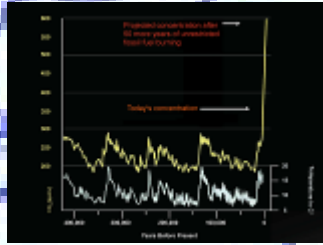
Annual electricity bill: £ e.g. 350

Full postcode:

[continue ▶](#)



The Action Plan Jigsaw



GAULOISES
Cheminée



LEGERES



For,
in the final
analysis, our
most basic common
link is that we all
inhabit this small planet.
We all breathe the same
air. We all cherish our
children's future. And
we are all mortal.



'Few will have the greatness to bend history itself, but each of us can work to change a small portion of events, and in the total of all those acts will be written the history of this generation. It is from numberless diverse acts of courage and belief that human history is shaped. Each time a man stands up for an ideal, or acts to improve the lot of others, or strikes out against injustice, he sends forth a tiny ripple of hope, and crossing each other from a million different centres of energy and daring those ripples build a current which can sweep down the mightiest walls of oppression and resistance.'

"Give me a place to stand, and I will move the world"





Don't just stand there, do something!

Thank you

Marches Energy Agency
23 Swan Hill
Shrewsbury
SY1 1NN
01743 246 007



www.mea.org.uk