

MAYOR OF LONDON

London and the case for greater devolution ALEO Conference, 28 November 2018

John Kolm-Murray



MAYOR OF LONDON

London: zero carbon city by 2050

The Mayor published the London Environment Strategy in May 2018

It commits us to a 40% reduction in CO₂ by 2022 and to become a zero carbon city by 2050 (from 34Mt CO₂ in 2015)

The above is underpinned by three high-level objectives:

- decarbonise London's homes and workplaces, while protecting the most disadvantaged by tackling fuel poverty
- develop clean and smart, integrated energy systems using local and renewable energy resources
- deliver a zero emission transport network by 2050

The Mayor's Fuel Poverty Action Plan

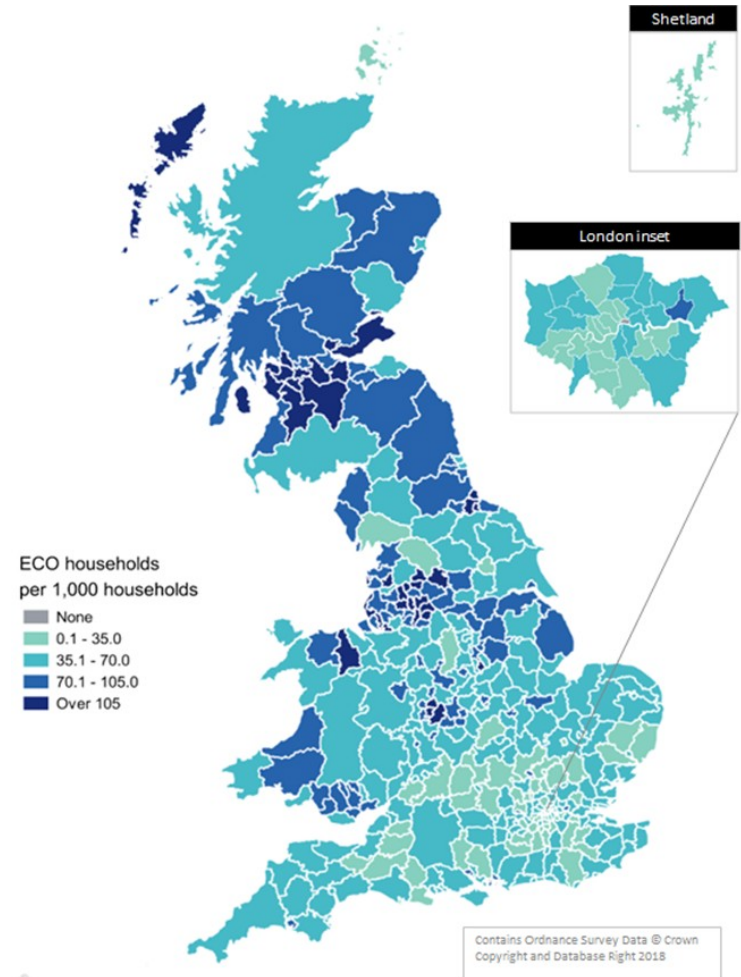
- Boosting the **incomes** of people in fuel poverty in London by supporting benefits uptake campaigns and **referral and advice services**
- Increasing the **energy efficiency** of London's homes
- Tendering for the delivery of an **energy supply company**, aiming to offer fairer energy bills to Londoners as soon as possible



MAYOR OF LONDON

Fuel poverty in London

- **341,000** households affected
119,000 of these contain children
59,000 contain adults aged 60+
126,000 households renting privately
Lone parents, Londoners with long term conditions/disabilities and BAME populations particularly affected
- Between 2011/12 and 2016/17 there were **14,000** excess winter deaths in London. Over **4,200** of these can be attributed to cold housing conditions
- London loses out on its fair share of funding through schemes such as the Energy Company Obligation



MAYOR OF LONDON

London's energy efficiency funding deficit

Under successive schemes London has lost on out energy supplier obligation funding

We have around 12.5% of Great Britain's population yet only 7.6% of households in London have benefited from ECO. This is similar to both the West Midlands CR and Greater Manchester despite them having less than a third of the population of Greater London

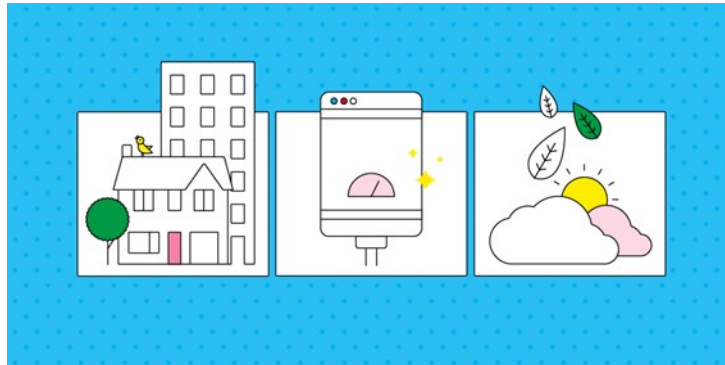
Our levels of fuel poverty are not dramatically different from the English average yet London billpayers only receive 61p of every £1 they contribute to ECO

London faces many challenges: high numbers of flats; planning; access and parking

MAYOR OF LONDON

Key projects

- Warmer Homes – grants of up to £4,000 to deliver heating, insulation and ventilation improvements
- Fuel Poverty Support Fund – supporting boroughs to roll out existing advice and referral networks to all of London. Linked income maximisation service
- Energy supply company – fairer tariffs for all Londoners



Warmer Homes: overview

- Open to owner-occupiers since January 2018
- Expanded to the private rented sector in November 2018
- Over 1,100 applications to date
- Up to £4,000 available to install heating, ventilation and insulation improvements (plus any ECO or local carbon offset funds)
- More supportive process than typical schemes
- Eligibility based on standard ECO criteria or ECO Flex Statements of Intent
 - Will use new Londonwide Sol from December 2018
- Support available from funded borough advice services
- Can link with Fuel Poverty Network Extension Scheme etc

Fuel Poverty Support Fund

- Four boroughs (Croydon, Islington, Kingston, Lewisham) have been funded to expand their existing advice and referral schemes to deliver a Londonwide advice and referral programme
- Advice and support is available to Londoners in or at risk of fuel poverty, including:
 - Support with Warmer Homes applications
 - Home energy visits
 - Billing and debt support
 - Access to social tariffs

MAYOR OF LONDON

Other projects

Solar Together

Working with the London boroughs to aggregate demand for PV amongst households and so deliver significant savings

Cleaner Heat Cashback

Up to 40% cashback on new efficient heating systems for SMEs

London Community Energy Fund

Supporting the delivery of community energy projects to help towards our 2GW of solar target by 2050

RE:NEW

Support programme for retrofitting London's social housing. Over 130,000 homes improved since 2009

RE:FIT

Support programme for London's non-domestic public buildings. 550+ buildings supported since 2009

MAYOR OF LONDON

Key devolution asks

- An ECO apportionment in line with Scotland
 - £80m annually
 - The ability to tweak scores and household eligibility
- Power over Minimum Energy Efficiency Standards
 - Higher cost cap
 - Social housing?
- Authority to approve selective licensing schemes
 - MHCLG are too slow

MAYOR OF LONDON

Contact

John Kolm-Murray
Principal Policy & Programme Officer
020 7983 4451
john.kolm-murray@london.gov.uk